



Pacific Climate Change Roundtable

# PACC Side Event

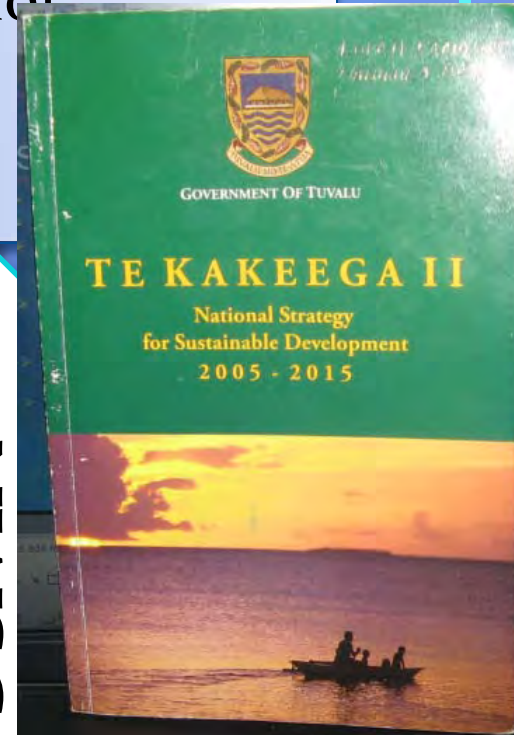




PACC Country:	Tuvalu
Priority Sector:	Water
Island type:	Atoll
Population:	approx. 10,000

# Comp 1: Mainstreaming

Te Kakeega II: National Strategy for Sustainable Development  
2005-2015.



NWSCC



NWSCC

Tuvalu National Climate Change Policy

PACC

# Comp 2: Demonstration

-V&A Assessments

-Water Quality Surveys



# Comp 2: Demonstration

- V&A: Participatory Approach
- Active Community Participation



# IMPACTS OF CC ON LIVELIHOOD & WATER




Water shortage – is now an urgent issue in

Tuvalu



# Comp 3: Communications & Awareness

- 
- SOME WATER-SAVING TIPS**
  - Turn off water while shaving or brushing your teeth
  - Wash clothes only when you have a full load
  - Teach your family to turn taps off tightly after every use
  - Choose water-saving appliances
  - Whenever possible, take a bucket wash rather than a shower
  - Attend to the young ones when sending them to take their shower
  - Wash your dishes in the sink or a basin that is half filled with water instead of running water from tap.
  - Install low volume toilets or sort to FALEVATIE
  - BE A WATER ACTIVIST!!!!!!!



## Technical Support



# Fakafetai Tuvalu





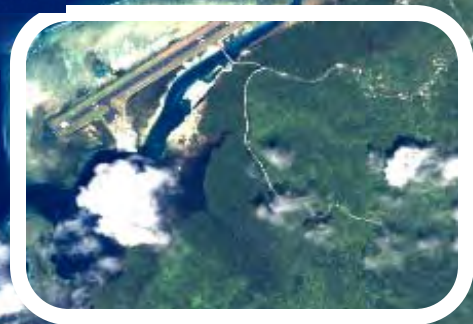


PACC Country:  
Federated  
States of  
Micronesia

Priority  
Sector:  
Coastal Mgt

Island type:  
Volcanic, Atoll

Tot. Popn:  
107,000  
(2000 census)



Project Site  
:



# Comp 1: Mainstreaming


- NCCP - 2009
- Legislation Review - 2011
- High Level Meetings with Government & Partners
  - President
  - Cabinet
  - Municipal Mayors
  - Embassies, Japan, USA, Australia, China

## VII. APPROVAL

This FSM Nationwide Climate Change Policy 2009 is hereby approved and becomes effective this:

15<sup>th</sup> Day of December 2009.

SIGNED

  
H.E. Emanuel Mori  
President  
The Federated States of Micronesia



***Up for 2<sup>nd</sup> Reading & adoption this week 14-18 March  
2011***

- 10<sup>th</sup> KOSRAE STATE LEGISLATURE
- FIRST REGULAR SESSION

L. B. No. 10-\_\_\_\_\_

**A BILL FOR AN ACT**

To amend Titles 1, 5, 7 and 11 of the Kosrae State Code to add new definitions and requirements relating to climate change and climate change adaptation measures; and for other purposes.

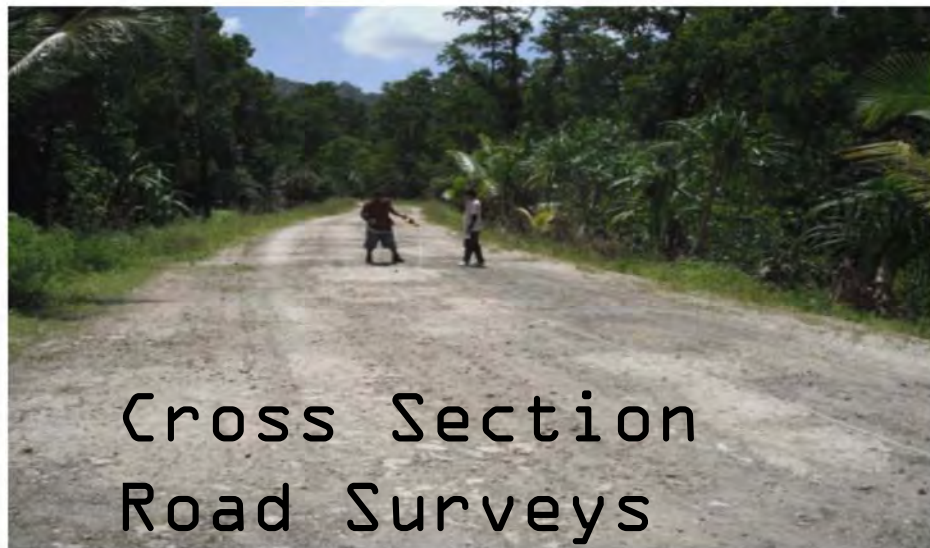
# Comp 2: Demonstration

- V&A assessments carried out:

Beach Profiling

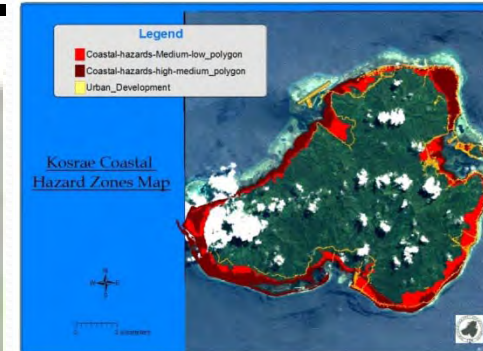


Cross Section  
Road Surveys



# Comp 2: Demonstration

- V&A assessments carried out:



# Comp 2: Demonstration

- Implementation of adaptation activities:



- Road des  
using ADB  
Recommen



# Comp 3: Communications

- Awareness: Students, Women's Conference






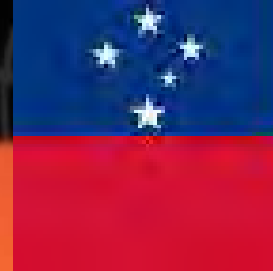
**What do these images  
have in common?**





# Kulo FSM!



A scenic photograph of a tropical beach at sunset. The sky is a vibrant orange and yellow, reflecting on the water. Silhouettes of palm trees and a cliff are visible against the bright sky. The foreground shows a sandy beach with some rocks.

PACC Country: Samoa

Priority Sector: Coastal Management

Island type: Volcanic

Population: approx. 182,000 (2005 census)

# Samoa's NAPA – completed 2005

<b>PRIORITY</b>	<b>SECTORS</b>	<b>PROJECT PROFILE</b>
1	Water	Securing Community Water Resources
2	Forestry	Reforestation and Rehabilitation and Community Forest Fire Prevention Program
3	Health	Climate Health Program
4	Climate Services	Climate Early Warning System
5	Agriculture & Food Security	Agriculture and Food Security Sustainability
6	Land use Planning	Zoning and Strategic Management Planning
7	Coastal Sector	Implementing CIM Plans for Highly Vulnerable Districts
8	Village Communities and Biodiversity	Establishing Conservation Programme in highly Vulnerable Marine & Terrestrial Areas in Communities
9	Tourism	Sustainable Tourism Adaptation Program

# Implementing NAPAs – 2008 – Priorities integrated

	Priorities	Sectors	Project Profile
1	4 3 5	<b>Climate</b> Health Agriculture	<b>Early Warning System (CLEWS)</b> Climate Health Programme Agriculture Sustainability & Food Security
2	4 7	<b>Climate</b> Coastal	<b>Early Warning System</b> Coastal & River Protection <b>PACC</b>
3	4 2 8	<b>Climate</b> Forestry Environment	<b>Early Warning System</b> Reforestation and Rehabilitation Terrestrial Biodiversity – PAs on Public Lands
4	4 6 1 2 9	<b>Climate</b> Land use Planning Water Forestry Tourism	<b>Early Warning System</b> Zoning & Strategic Planning Surface Flood Adaptation Forest Fire Prevention Sustainable Tourism Adaptation
5	4 1 7 8	<b>Climate</b> Water Coastal Environment	<b>Early Warning System</b> Protection of Water Resources Coastal Wetlands Rehabilitation Marine Biodiversity Conservation - MPAs

# Component 1: Mainstreaming

NSDS 2008-2012

NATIONAL ADAPTATION PROGRAMME OF ACTION  
SAMOA  
MINISTRY OF NATURAL RESOURCES, ENVIRONMENT & METEOROLOGY



Compiled by:  
National Adaptation Programme of Action Task Team (NTT), 2005  
Under the auspices of the Samoa National Climate Change Country Team (NCCC) 2005  
Implementing Agency: Ministry of Natural Resources, Environment & Meteorology (MNR&M), 2005  
Executing Agency: United Nations Development Program (UNDP) / Global Environment Facility (GEF)

Integrated Approach

NAPA priorities – integrated approach 2008

Priorities	Sectors	Project Profile
4	Climate	Early Warning System (CLEWS)
3	Health	Climate Health Programme
5	Agriculture	Agriculture Sustainability & Food Security
4	Climate	Early Warning System
7	Coastal	Coastal & River Protection <b>PACC</b>
4	Climate	Early Warning System
2	Forestry	Reforestation and Rehabilitation Terrestrial Biodiversity – PAs on Public Lands
8	Environment	
4	Climate	Early Warning System
6	Land use Planning	Zoning & Strategic Planning
1	Water	Surface Flood Adaptation
2	Forestry	Forest Fire Prevention
9	Tourism	Sustainable Tourism Adaptation
4	Climate	Early Warning System
1	Water	Protection of Water Resources
7	Coastal	Coastal Wetlands Rehabilitation Marine Biodiversity Conservation – MPAs
8	Environment	

Coastal Infrastructure Management Project: CIM Strategy

Prepared for  
Government of Samoa

By  
Beca International Consultants Ltd

January 2001

Climate Risk Profile  
for Samoa

Report Prepared by  
Wairarapa J. Young  
Samoa Meteorology Division

March, 2007

SAND MINING &  
RECLAMATION  
POLICY

BY-LAWS –  
DEVELOPED &  
IMPLEMENTED AT  
GRASS ROOTS  
LEVEL

# Component 2: Demonstration

Technical Assessments completed

- CIM Strategy & Plans
- Site specific surveys
- Socio Economic Assessment
- Lessons learned - CBDAMPIC, Tsunami impact
- 2009

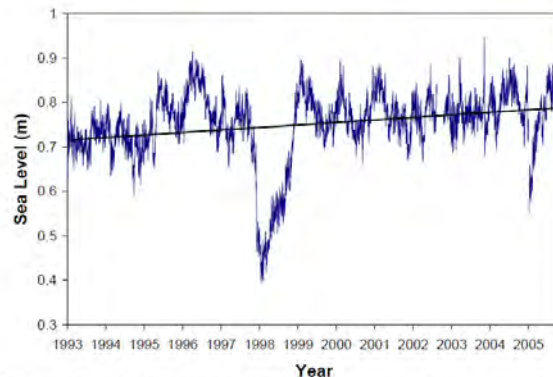
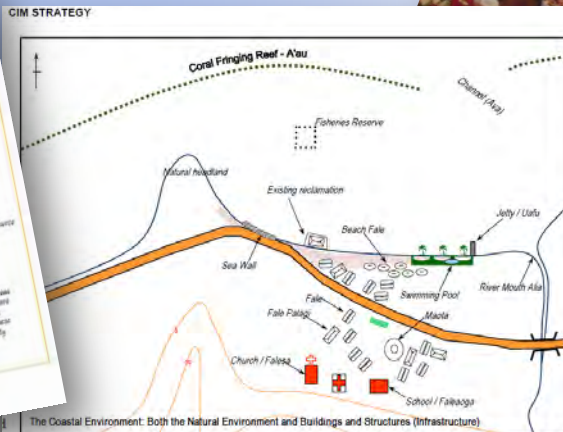


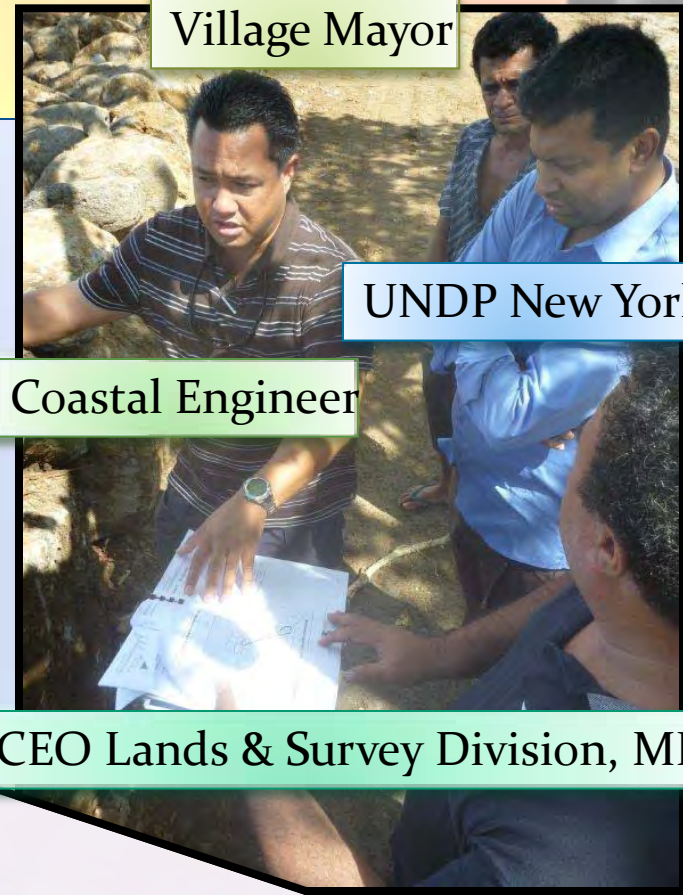
Figure 2 Daily sea level for Apia (1993 to 2005), relative to mean sea level. Also shown is the linear trend in sea level over the same period (5.2 mm/yr).



# Component 2 & 3: Demonstration / Capacity Building

## Implementation of Adaptation Actions:

- Integrated Coastal Protection Mechanism



Village Mayor

UNDP New York

Coastal Engineer

Ex ACEO Lands & Survey Division, MN



Faafetai Samoa!







PACC Country:  
Nauru

Priority Sector:  
Water

Island type:  
Raised atoll



Population:  
~ 11,000 (2006 census)



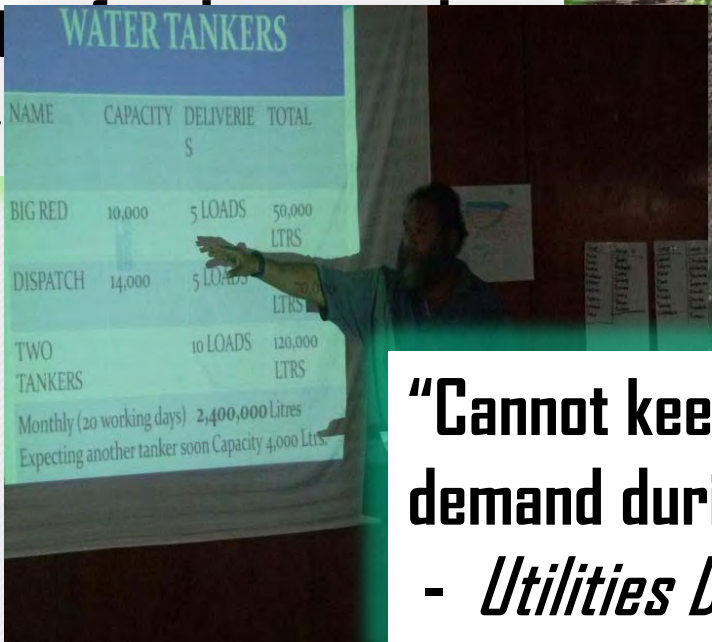
# Responses on Water and the Implications of Climate Change

**“Water storage is insufficient during drought” - *Denig Resident***

**“Most of Household Gardens have failed due to lack of rain and quality water” -**



WATER TANKERS			
NAME	CAPACITY	DELIVERIE	TOTAL
		\$	
BIG RED	10,000	5 LOADS	50,000
			LTRS
DISPATCH	14,000	5 LOADS	
			LTRS
TWO TANKERS		10 LOADS	120,000
			LTRS
Monthly (20 working days)			2,400,000 Litres
Expecting another tanker soon			Capacity 4,000 Litrs



**“Cannot keep up with water demand during drought”.**  
**- *Utilities Department.***

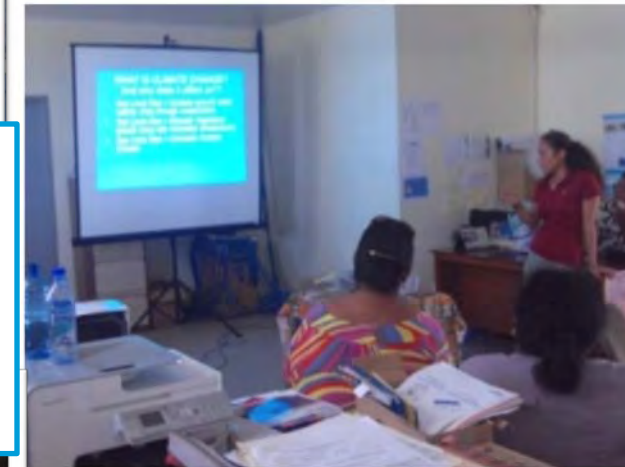
# Comp 1: Mainstreaming CC risks at national level

Cabinet Endorsement



Sustainable  
Development Strategy  
2021-2025

...ply to meet socio-economic development needs



...through reverse  
...reverse oceanic process maintained at  
...use-effective and sustainable levels  
Department of  
Environment and NDA

**PACC incorporates  
CC risks into the  
National Water and  
Sanitation Policy**

Community/Technical  
Consultations

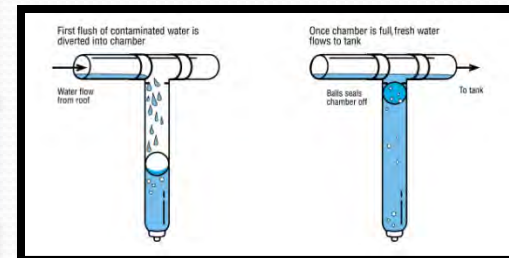


# Comp 2: Demonstration Measures

- Baseline Assessments
- Socioeconomic Survey
- Community Consultations

## • Assessment Results:

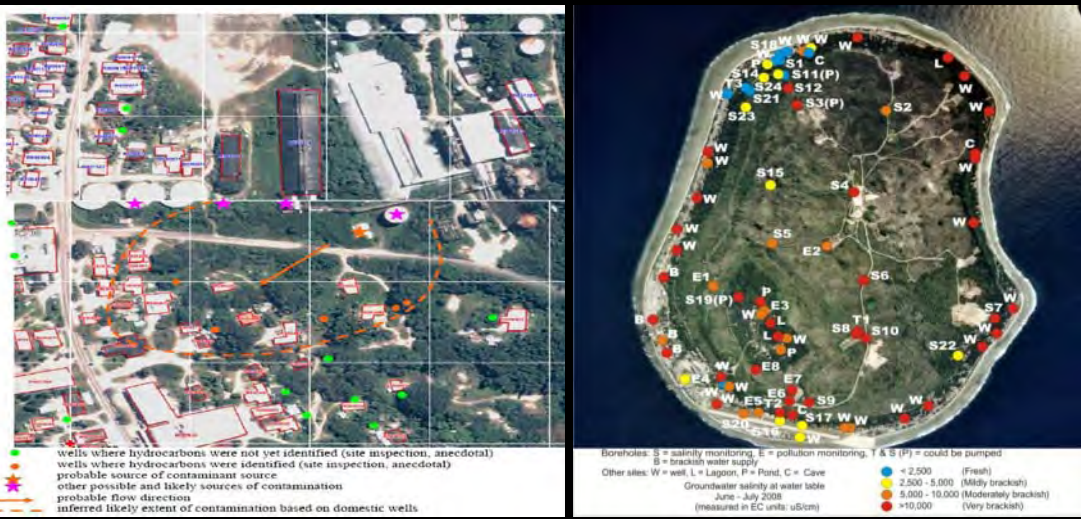
- Rainwater Harvesting Systems including First Flush:
- Solar Water Purifiers
- Alternative Water Use



# Comp 3: Capacity Building

## DEVELOPING TECHNICAL CAPACITY

### - GIS MAPPINGS

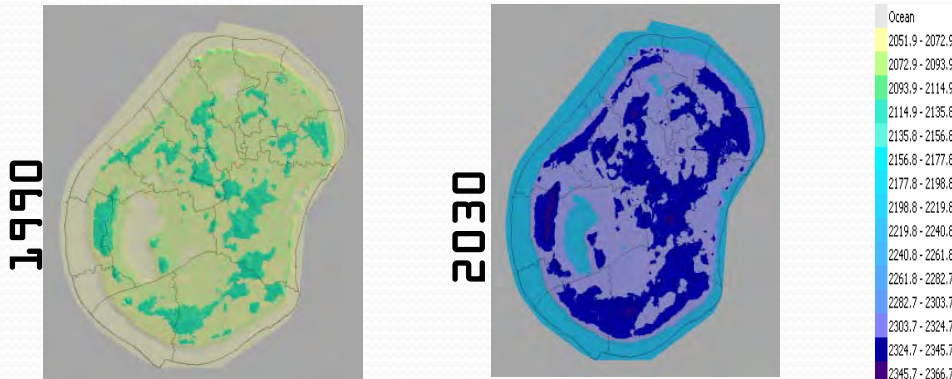


## COMMUNITY WORKSHOPS and AWARENESS PROGRAMS



- Youth Development Programs
- Local Media
- Climate Change, Sanitation and Water Community Outreaches
- Government Department Displays
- International Day Events  
 .e.g World Water Day / World Food Days

### - CLIMATE SYSTEMS PROJECTIONS





TUBWA  
KORR!

NAURU





PACC Country: Palau

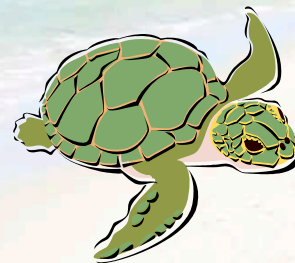
Priority Sector: Food Security & Food Production

Island type: Atoll, Raised limestone

Population: ~ 20,000 (2005 census)

Presented By The:  
**PALAU PACC TEAM**  
Palau represented by

**Leonard Baslilius, Jordan Malsol & JeRome Temengil**



Niue  
March 14-18, 2011

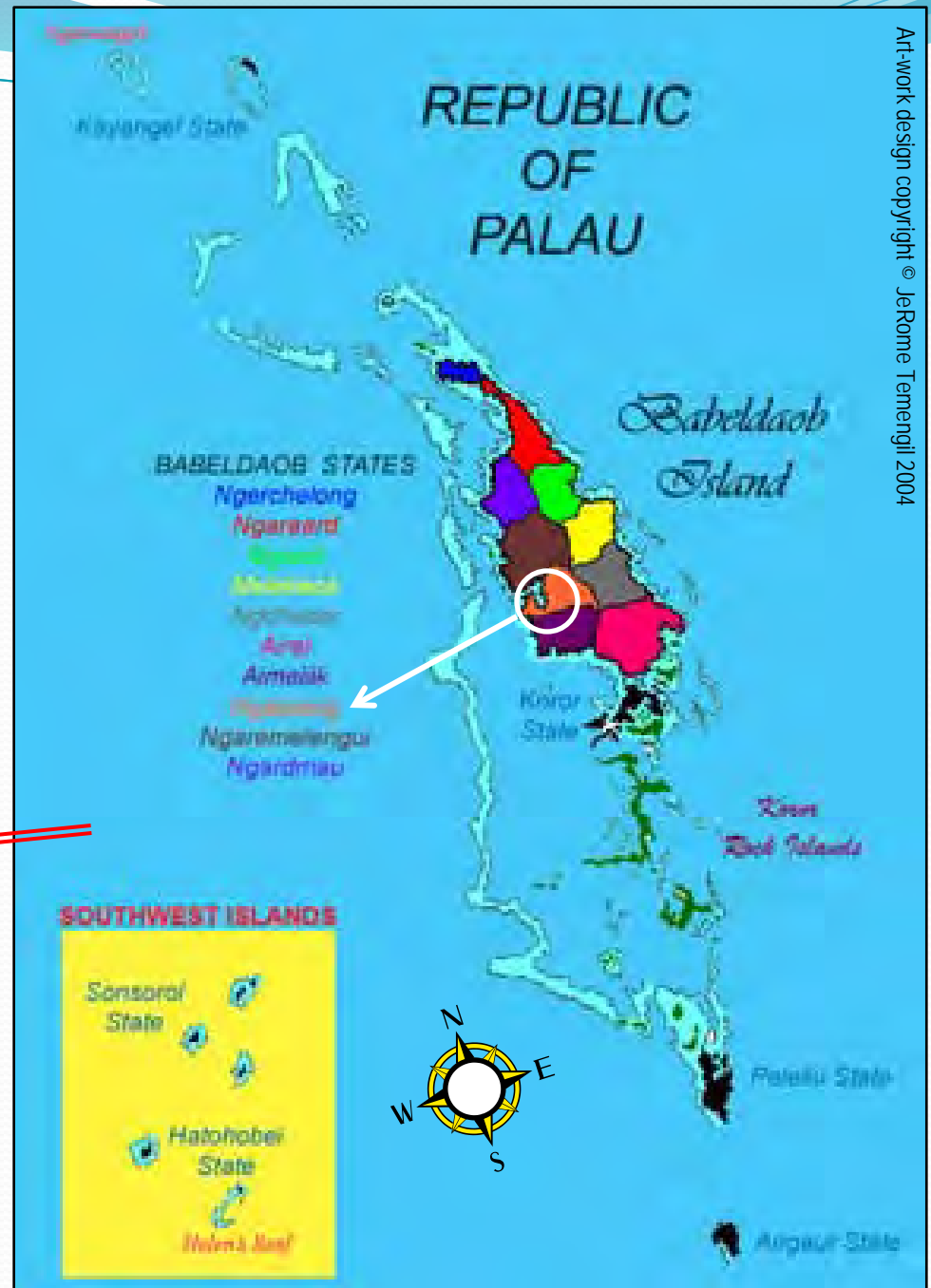


## Overview of Palau Island:

Palau is comprised of 16 states from Kayangel to the north, and Ngerchelong, Ngaraard, Ngiwal, Melekeok (current capital), Ngchesar, Airai, Aimeliik, Ngatpang, Ngeremlengui, and Ngardmau located on the big island of Babeldaob to Koror (former capital) across the bridge to the south and Peleliu and Angaur farther south through the rock islands and Sonsorol and Hatohobei about a days boat ride far south. The Palau archipelago stretches 700 km from Ngeruangel atoll in the north to Helen's atoll to the south.



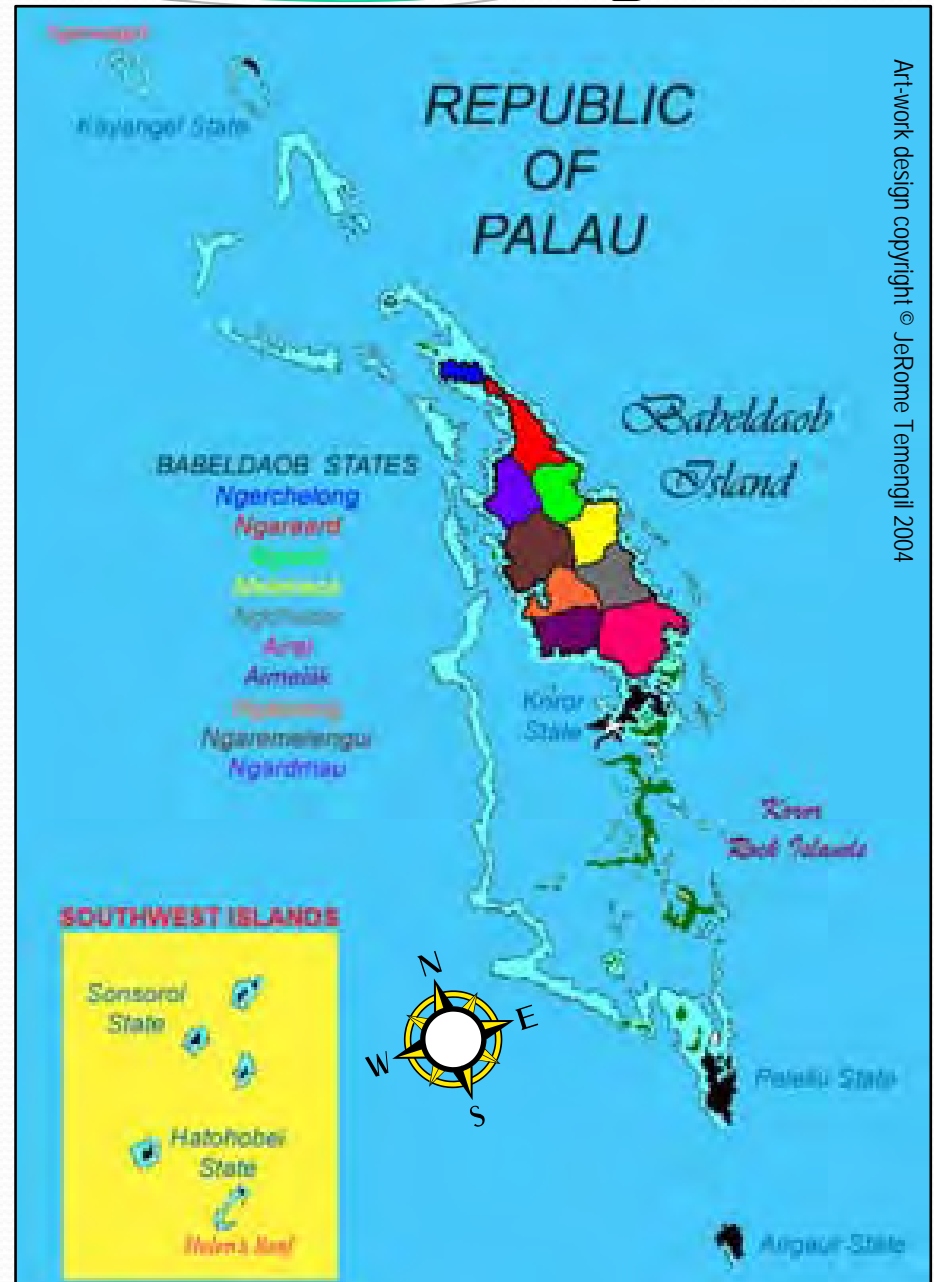
Globe picture courtesy of google earth map!





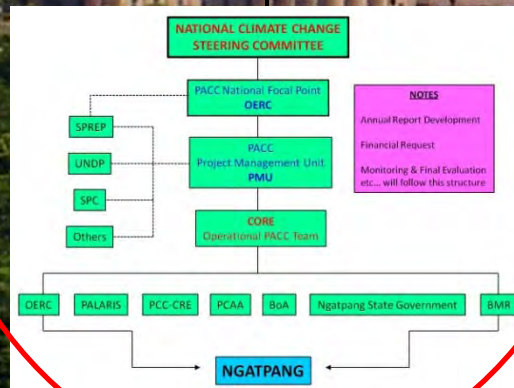
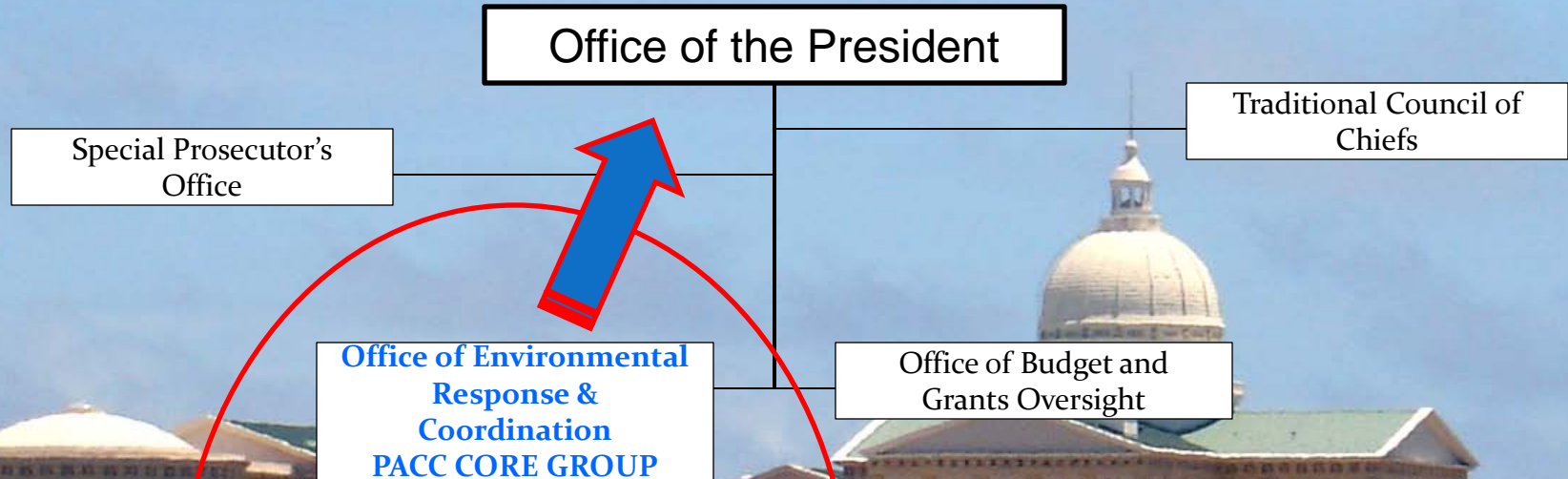
# Comp 1: Mainstreaming

- Consultations & reviews ongoing:
  - Develop NCCP (with SLM)
  - State-tailored Policies on CC x LB States
- \*Comp 2 results help inform policy content



# Comp 1: Mainstreaming

## Executive Branch of the Government



# Comp 1&3: Mainstreaming & Capacity Building

Community at the work site!



Congressman with both traditional chiefs at work site

## Consultations & work at site



Informal meeting with the community and State Government Officials



Sustainable Land Management (SLM) Meeting

# Component 2: Demonstration

- Assessments & implementation ongoing

- Taro Plantation Site

- implementation & monitoring - salt tolerant taro species

- Mari-culture site:

- supply chain & hatchery assessments;

- Socio economic

- assessments (SEA-PACC)

- training completed for

- Core Group

- SEA-PACC planned for the state.

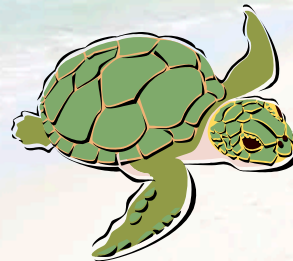




We say: MESULANG -  
thank you Palau!

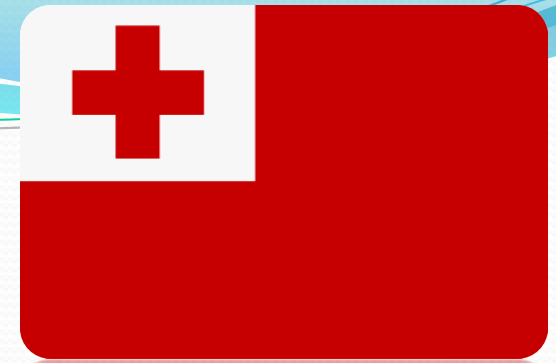
Presented By The:  
**PALAU PACC TEAM**  
Palau represented by

*Leonard Baslilius, Jordan Malsol & JeRome Temengil*



Niue  
March 14-18, 2011





PACC Country:  
"The Kingdom"

Priority Sector:  
Water resource mgt

Island type:  
Limestone, *1st* on  
volcanic base

Population:  
~ 103,967  
(WB: 2009 census)



KINGDOM OF TONGA

# PACIFIC ADAPTATION TO CLIMATE CHANGE PROJECT: TONGA

PCCR MEETING: NIUE (Alofi)

## Capacity Building & Communications

Pilot site: Hihifo district



Ministry of Environment and Climate Change: Tonga, PO.BOX 917, Nuku'alofa

PACC TONGA: Project Management Unit

# Comp 3: Capacity Building & Communication





# Comp 3: Capacity Building & Communication

## CC Awareness Programme at Primary Level



Learning materials for communities

### Sites: Billboard



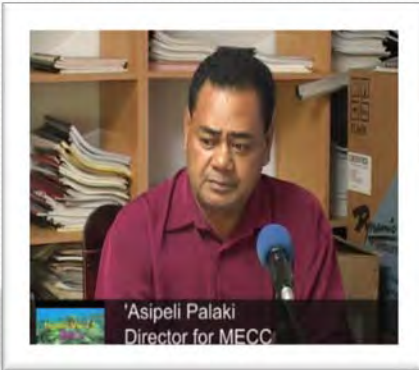
Quarterly Newsletter



Story books, brochures, in local language

# Comp 3: Capacity Building & Communication

## PACC TV Program and Radio announcement to raise awareness



TV Tonga  
Radio:

AM 1017  
FM 90



Broadcasted  
nationally  
every quarter

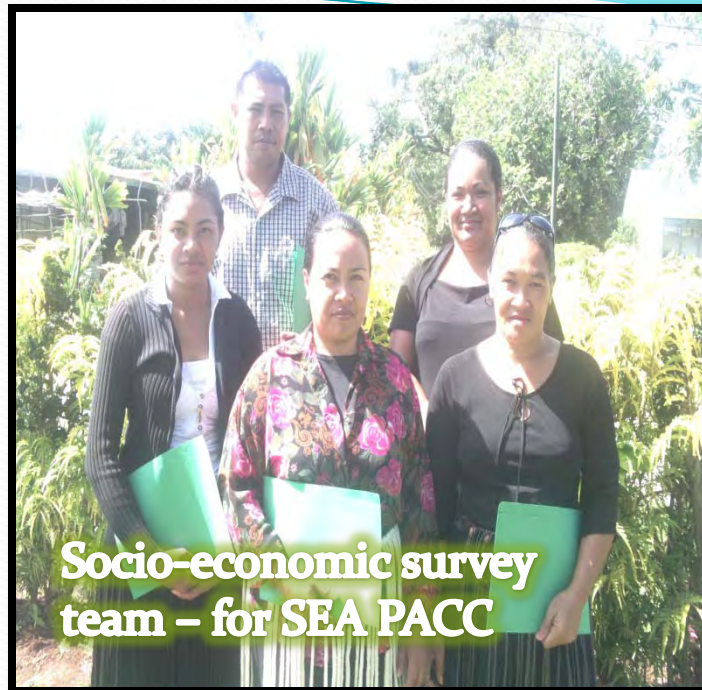


1. TV Spots
2. Radio Spots
3. School Awareness programs

A screenshot of the Tonga PACC project Webpage. The header features the logo of the Ministry of Environment and Climate Change and the text 'MINISTRY OF ENVIRONMENT AND CLIMATE CHANGE'. The navigation menu includes: Home, Projects, About Us, Programmes, FAQ, The News, Employments, Events, Contacts, Publications, Photos Archive. The main content area is divided into several sections: 'Find More About' with a list of topics including Biodiversities & Conservations, Environmental Awareness, Environmental Legislations & Policies, International Obligations, Waste, Chemicals & Pollution Control, Coastal & Marine Management, Sustainable Land Management, Climate Change, Variability & Sea Level Rise, Ozone Depletion, and Energy Planning; 'Links to Donors' listing UNDP, GEF, and SPREP; 'Reports' with a list of years from 2011 to 2008; 'Who's Online' showing 6389 guests and 29 members online, with links for nalesoni.leka and admin; 'Latest News Summary' featuring a headline 'Lord Ma'afu Tukui'aulahi officially launched the Ministry's new website today' with a photo of the launch event; 'Pacific Adaptation to Climate Change Project (PACC Project)' with an 'Introduction' section stating that Pacific Island countries are already experiencing the impact of climate change; and a news item about 'Hihifo Schools ready to Adapt' with a photo of students. A large, semi-transparent watermark 'www.mecc.gov.to' is overlaid diagonally across the page.

Tonga PACC project Webpage

# Comp 2: Demonstration - site specific assessments



# Malo 'Aupito: Thanks



Visit us on our Website...  
[www.mecc.gov.to](http://www.mecc.gov.to)  
Pacific Adaptation to Climate Change Project: Tonga  
Building resilience to Climate Change  
for Tonga's communities



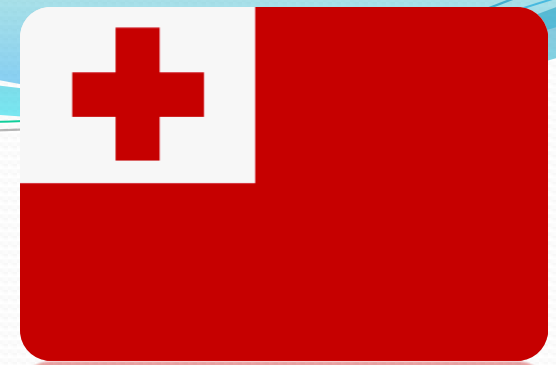
## PACC TONGA

Visit Us... Now

Pacific Adaptation to Climate Change  
PACC Tonga

[www.mecc.gov.to](http://www.mecc.gov.to)  
PACC PMU 8885999 OR 35050

Building resilience to Climate Change for Tonga's communities

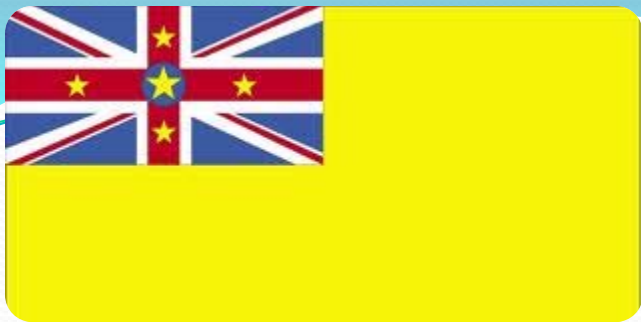


MALO

AUPTO!

From

Tonga



**PCCR HOST 2011:**

Niue

**Priority Sector:**

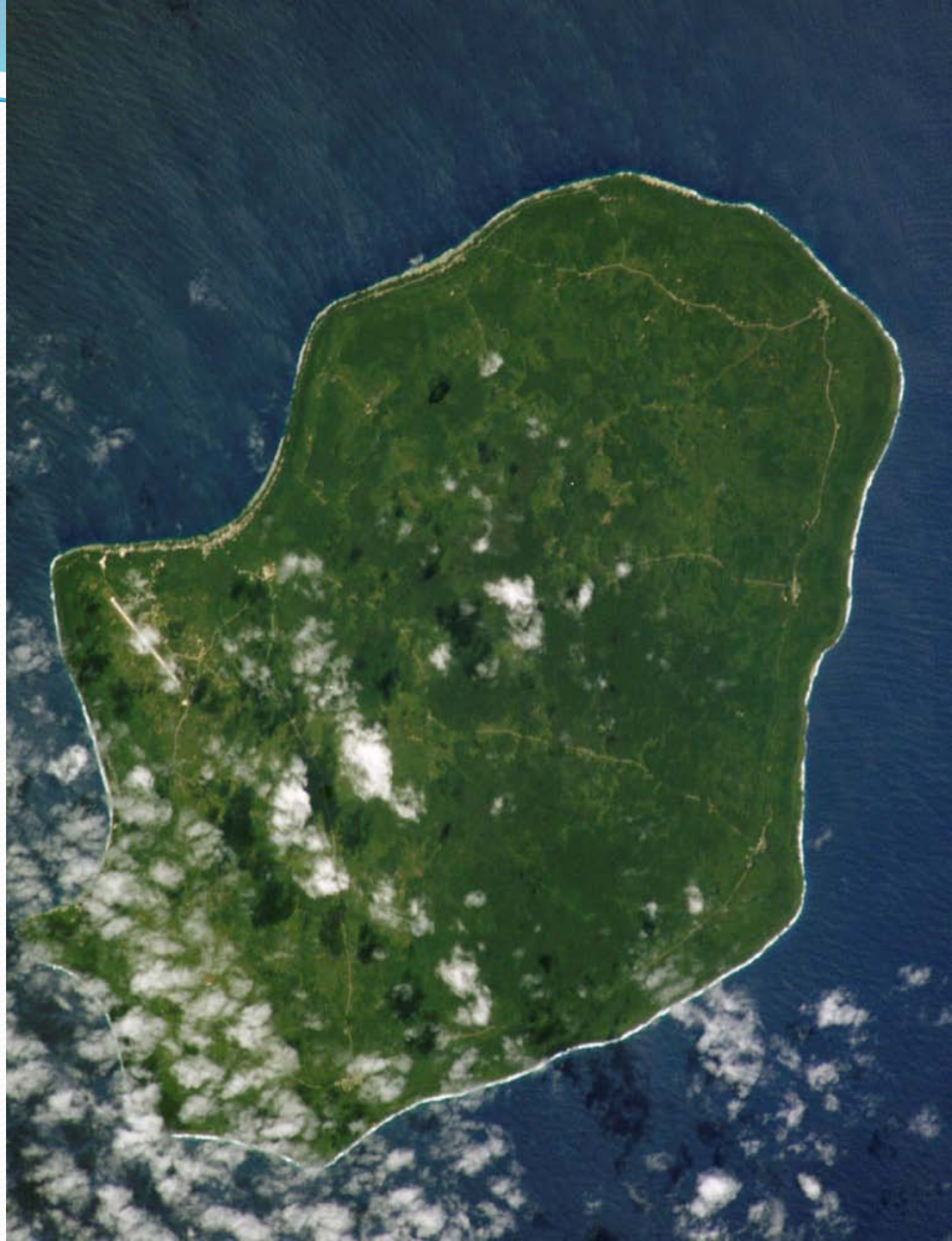
Water Resource Mgt

**Island type:**

Raised limestone  
island

**Population:**

approx. 1600  
(2006 census)



# Water Resource Management (Rainwater catchment systems)

- Niue Water Steering Committee (NWSC) PACC & IWRM Projects
- Overall Goal - "Provide every household on Niue with a water catchment system"



# Comp. 1:

## Mainstreami

- *Niue Climate Change Policy developed;*
- *Development of the Joint National Action Plan (JNAP) on CCA & DRM (with SPREP, SPC-SOPAC);*
- *Linked to the Niue National Strategic Plan 2009-2013.*





# Comp 2: Demolition

Current Village Reservoir -  
part of the national  
distribution network  
(Government)



Past water  
catchment  
systems made of  
cement.

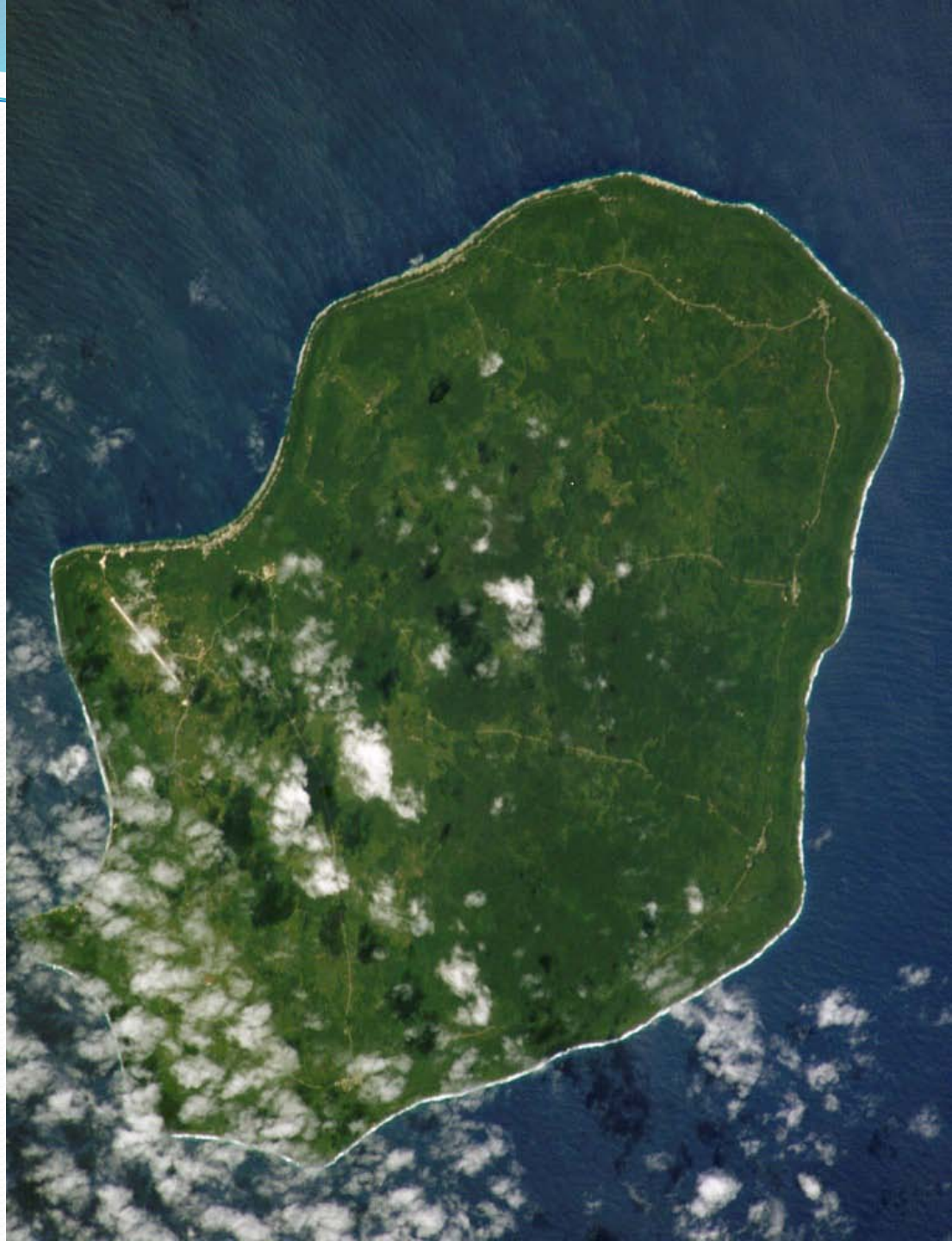
# Comp.3: Communications & Lessons Learnt

- Ongoing Consultations with Stakeholders
- TV Spots & Ads
- Community Support for Village Activities
- National Activities example National Song-Quest (Oct 2010)
- Ongoing Community Engagement.





Fakaue  
lahi  
Niue!





Over to PNG 😊