

# SPREP

# Regional Waste and Pollution Management

Stewart Williams PacWaste Regional Project Manager  
SPREP Waste Management Team

Pacific Ecosystem-based Adaptation to Climate Change (PEBACC) – Project Inception Workshop

Novotel

Lami

Republic of Fiji

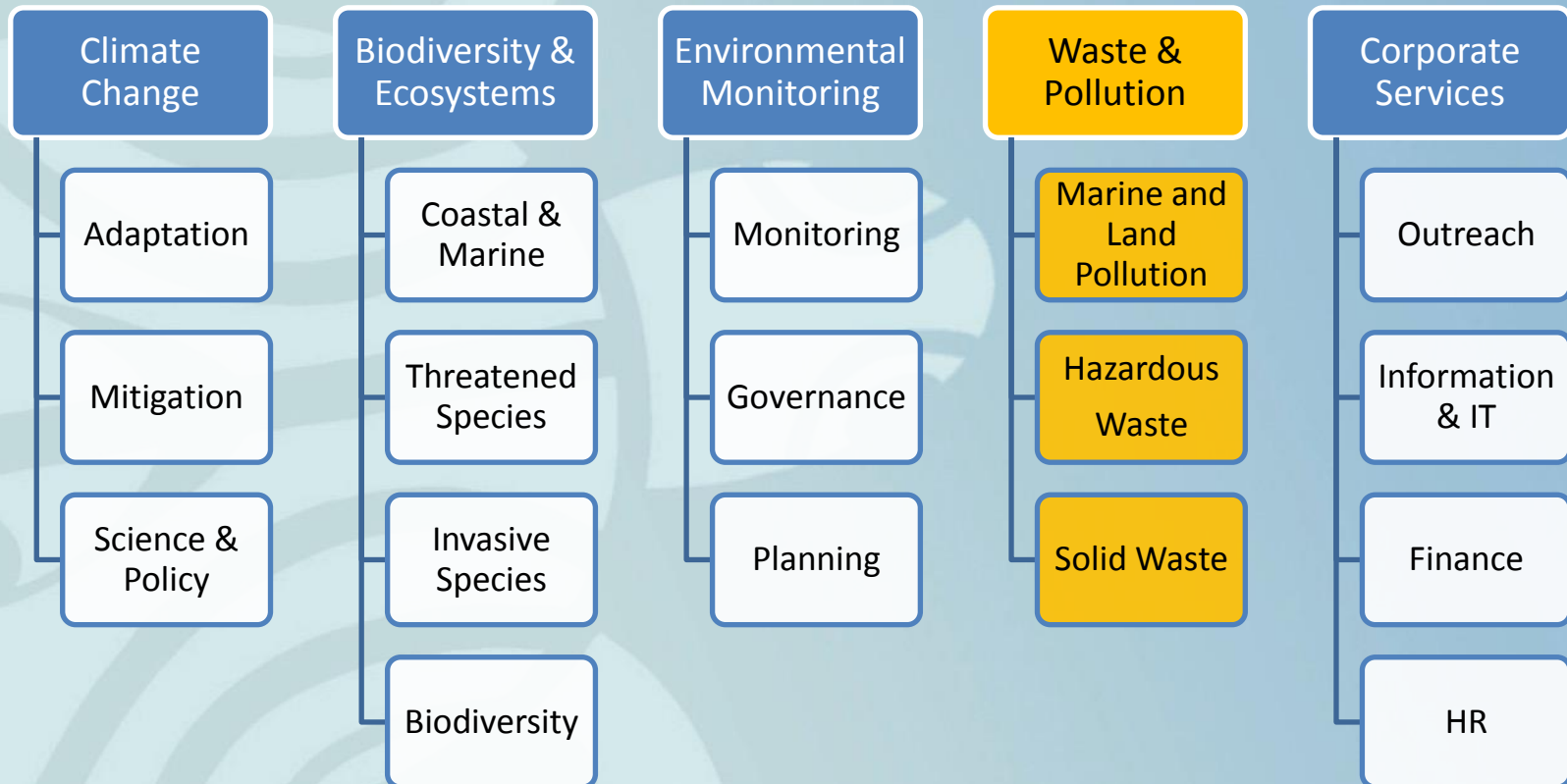
10-11 December 2015

## Presentation Aims

- Introduce the SPREP Waste Management Division
- Summarize key waste management priorities and projects in the Pacific region
- Identify potential areas of collaboration between waste management and PEBACC



# SPREP Structure



## Marine Pollution



- Marine oil and waste management
- Ships Waste Management
- Port Waste Management
- Invasive Marine Species including ballast water
- Marine litter management

# Hazardous Waste Management

Integrated waste management includes hazardous waste

- Asbestos
- E-Waste (electronic wastes)
- Chlorinated organics
- Insecticides and herbicides
- Heavy Metals
- Waste oil
- Medical wastes
- ODS Gases



## Solid Waste Management

Both regional and national strategies with a priority on 3Rs and return:

- Separation of wastes
- Backyard composting of vegetable and food scraps
- Recycling of glass, plastic, aluminium and paper
- Improved collection and disposal systems
- Improved financial mechanisms

Waste mass is minimised and collection costs reduced



## Major Regional Waste Projects (SPREP/JPRISM)

Regional Waste projects	Focus	Budget (USD)	Countries	Timelines
PacWaste (SPREP/EU)	Hazardous Wastes Integrated Solid Waste Management Regional Information Exchange	9 Million	15	2013-2017
GEFPAS UPOPS (SPREP)	Solid Waste Hazardous Waste Training	3 Million	14	2014-2018
JPRISM (JICA)	Solid Waste Landfill Improvements (inc. Fukuoka Method) Capacity Building	10 Million	11	2012-2016
AFD (SPREP)	Waste Oil Collection & Management	1.4 Million	4	2013-2017

## PEBACC Collaboration Areas

Target critical 'waste' stressors to the ecosystems:

- a. Landfill leachate from dumpsites
- b. Pollutants from open burning of waste
- c. Chemical impacts from dumped batteries, e-waste and pesticide containers
- a. Litter/pollution impacts - ineffective collection, containment & recycling





## PEBACC Collaboration Areas

### Potential Areas:

- Cost effective collection systems introduced
- Diversion of waste from landfill/large scale green waste composting initiated
- Improved landfilling techniques/elimination of waste burning commenced
- Recycling of batteries, aluminium improved
- Education at all levels



Component	JICA/JPRISM	PacWaste (EU/SPREP)	GEFPAS SPREP (UPOPS)	JPRISM2? (2017-2021)	EDF 11? (2017-2021)
Improved landfilling/treatment techniques	Solomons Vanuatu Fiji	Lessons learnt Kiribati	Regional	Solomons ?Vanuatu ? Fiji?	Solomon's ?Vanuatu ? Fiji?
Green waste diversion from landfill/composting		Lessons learnt RMI Pilot	Regional	Solomon's ?Vanuatu ? Fiji?	Solomon's ?Vanuatu ? Fiji?
Collection or recyclables (Lead acid batteries/aluminum cans etc)	Solomons	Solomon's Vanuatu Fiji			
Improvements to the waste collection systems		Lessons learnt RMI Pilot		Solomon's ?Vanuatu ? Fiji?	Solomon's ?Vanuatu ? Fiji?
Waste water improvements				Solomon's ?Vanuatu ? Fiji?	Solomon's ?Vanuatu ? Fiji?

# THANKS FOR LISTENING!

SPREP Waste Management and Pollution Control Team,  
Apia, Samoa  
[wasteteam@sprep.org](mailto:wasteteam@sprep.org)